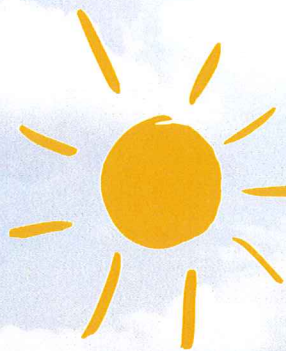
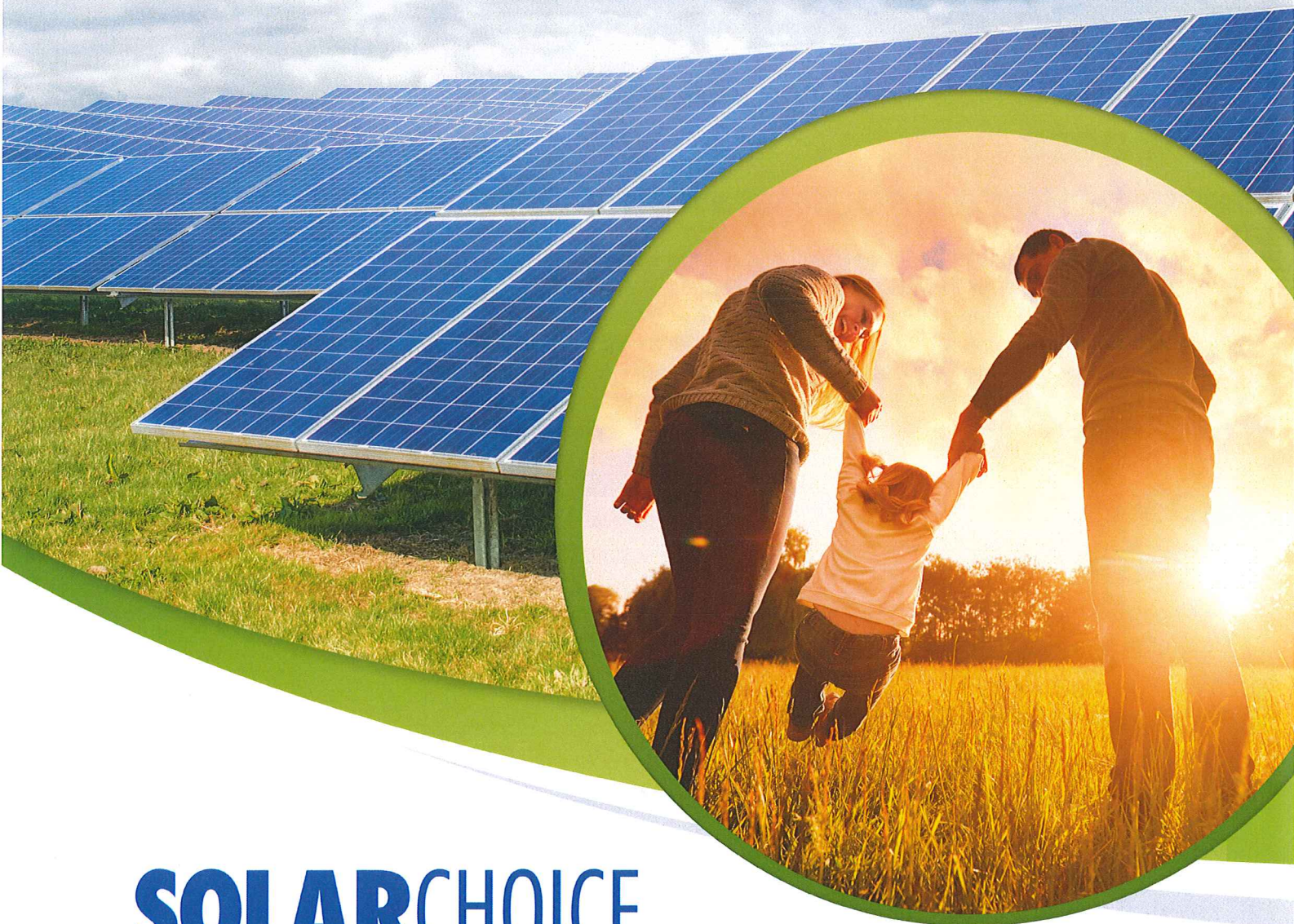


Large Commercial/Industrial



**SOLARCHOICE**

Local People Local Energy



**SOLARCHOICE**

A Community Solar program

Brought to you by:



# WHAT IS SOLARCHOICE?

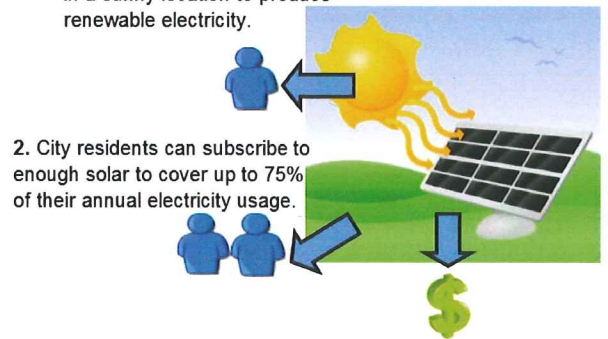
SOLARCHOICE is a City of Princeton community solar program. Community solar is a way to benefit from solar without installing it on your rooftop or property. It's an easy way to join the solar movement at a level that is affordable to you. It also allows customers an opportunity to gain a level of price certainty by locking in the cost of a portion of your future energy usage. While only 25% of rooftops are suitable for solar installations, community solar provides an equitable way to allow those who want more solar to get it without impacting those who do not.



## HOW DOES THE SOLARCHOICE PROGRAM WORK?

Instead of putting panels on your roof, we build a large solar project called a community solar garden with thousands of panels. You subscribe to a portion of the energy produced by one or more panels in the community solar garden \*, along with many other residents who share your commitment to renewable energy. Each month you receive a credit on your bill for the solar electricity generated by your subscribed panel(s).

1. Solar PV panels are installed in a sunny location to produce renewable electricity.



2. City residents can subscribe to enough solar to cover up to 75% of their annual electricity usage.

3. Each subscriber's utility bill is credited with the electricity created by their share of the solar community program.

## HOW MUCH DOES SOLARCHOICE COST?

Pricing is set on a per panel basis. Each customer may purchase the output from enough panels to cover up to 75% of their average monthly usage over the most recent 12 month period.

### Pick your plan:

**5-year plan:** \$200 per panel

**10-year plan:** \$395 per panel

**20-year plan:** \$770 per panel

*Value Calculation = estimated production x current applicable rate = bill credit*

*To participate in the SOLARCHOICE Program customer must be current with payment, at the time of subscribing.*

## WHAT IF I MOVE?

If you move to another address within Princeton your **SOLARCHOICE** subscription moves with you. If you move outside of the Princeton Public Utilities service territory, you may transfer your subscription to another Princeton Public Utilities customer or sell it to an interested party on the Princeton Public Utilities system. Transfer fee = \$25 per change.

\* One 335 watt panel is expected to produce 42.5 kWh per month for the first 5 years and average 40.42 kWh per month over the expected 25-year life of the panel.

# SOLARCHOICE APPLICATION - LARGE C&I

## STEP 1 ACCOUNT INFORMATION: (Please print clearly)

Account Name: \_\_\_\_\_  
Service Address: \_\_\_\_\_  
City: \_\_\_\_\_ State: \_\_\_\_\_ Zip: \_\_\_\_\_  
Primary Phone: \_\_\_\_\_ Email Address: \_\_\_\_\_  
Account Number: \_\_\_\_\_

## STEP 2 PICK YOUR PLAN: (Call us for help: (763) 389-2252)

### Maximum Number of Panels

Use your Average Monthly Usage to check the maximum number of panels you may subscribe to on the Panel Calculation Chart.

### Panel Calculation Chart

My Average Monthly Usage: \_\_\_\_\_ kWh  
Times 75%: \_\_\_\_\_ kWh  
Divided by 42.5: \_\_\_\_\_ Panels

Maximum panel subscription =  
(rounded to the nearest full panel)

**# of Panels:** \_\_\_\_\_ **Pick a Plan:**

X	<input type="checkbox"/>	\$200 (5 year plan)	=	\$
	<input type="checkbox"/>	\$395 (10 year plan)		
	<input type="checkbox"/>	\$770 (20 year plan)		

## STEP 3 SUBMIT APPLICATION AND SIGN SUBSCRIPTION AGREEMENT:

Drop off or Mail to Princeton Public Utilities, 907 First Street, Princeton, MN 55371

### Sign Subscription Agreement:

You will need to sign a "SOLARCHOICE Subscription Agreement" once your application is approved. This agreement will be mailed to you and needs to be submitted to our office along with your payment.

### Office use only:

Application: Received: \_\_\_\_\_ (Date and initials) Usage Verified \_\_\_\_\_ (Date and initials)  
Subscription Agreement: Sent to Customer: \_\_\_\_\_ (Date and initials) Received from Customer: \_\_\_\_\_ (Date and initials)  
Amount Due: \_\_\_\_\_ Paid in Full: \_\_\_\_\_ (Date and initials)  
Applied to Account #: \_\_\_\_\_ (Date and initials)

# PROGRAM DETAILS

- Only metered electric service accounts in good standing with the Princeton Public Utilities will be permitted to apply for the Program.
- Enrollment is available on a first come first served basis.
- Submittal of application does not guarantee participation in the Program.
- **SOLARCHOICE** customers are subscribing to the output of a solar array and have no ownership or access to the actual solar array.
- Production units are not guaranteed.
- Panel subscriptions are non-refundable once purchased and may not be returned, but may be transferred or assigned to another customer per program terms and conditions.
- Renewable Energy Credits (RECs) will be retained by the utility.

Full Terms and Conditions are available in the **SOLARCHOICE** Subscriptions Agreement.



www.princetonutilities.com  
907 First Street, Princeton, MN 55371  
(763) 389-2252

FOLD HERE, TAPE CLOSED, PLACE STAMP AND DROP IN THE MAIL

Princeton Public Utilities  
P.O. Box 218  
Princeton MN 55371-0218

PLACE  
STAMP  
HERE

---

---

---

USE A SMALL PIECE OF TAPE TO SEAL CLOSED HERE

CUT ALONG DASHED LINE